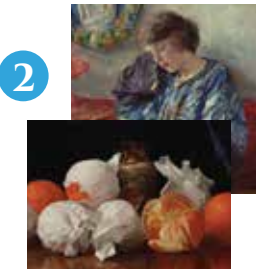




**CERAMICS OF WESTERN MEXICO**

1

**CALIFORNIA BOUNTY**  
Image and Identity:  
1850-1930  
**The Sons of Italy Gallery**  
**Gloria and Si Fluor Family Gallery**



3

**FIRST CALIFORNIANS**  
**Richard P. Ettinger Gallery**

**CALIFORNIA LEGACIES**  
Missions and Ranchos  
(1768-1848)

4

**Ruth Segerstrom Gallery**



5

**Anthony W. and Sharon D. Thompson Foyer**

**GEMSTONE CARVINGS**  
The Masterworks of  
Harold Van Pelt

6

**PIMCO Foundation Gallery**



7

**SPIRITS AND HEADHUNTERS**  
Art of the Pacific Islands  
**Anderson-Hsu-Tu Gallery**

**ANCIENT ARTS OF CHINA**  
A 5,000 Year Legacy

**MIAO**  
Masters of Silver

8



**East West Bank Gallery**

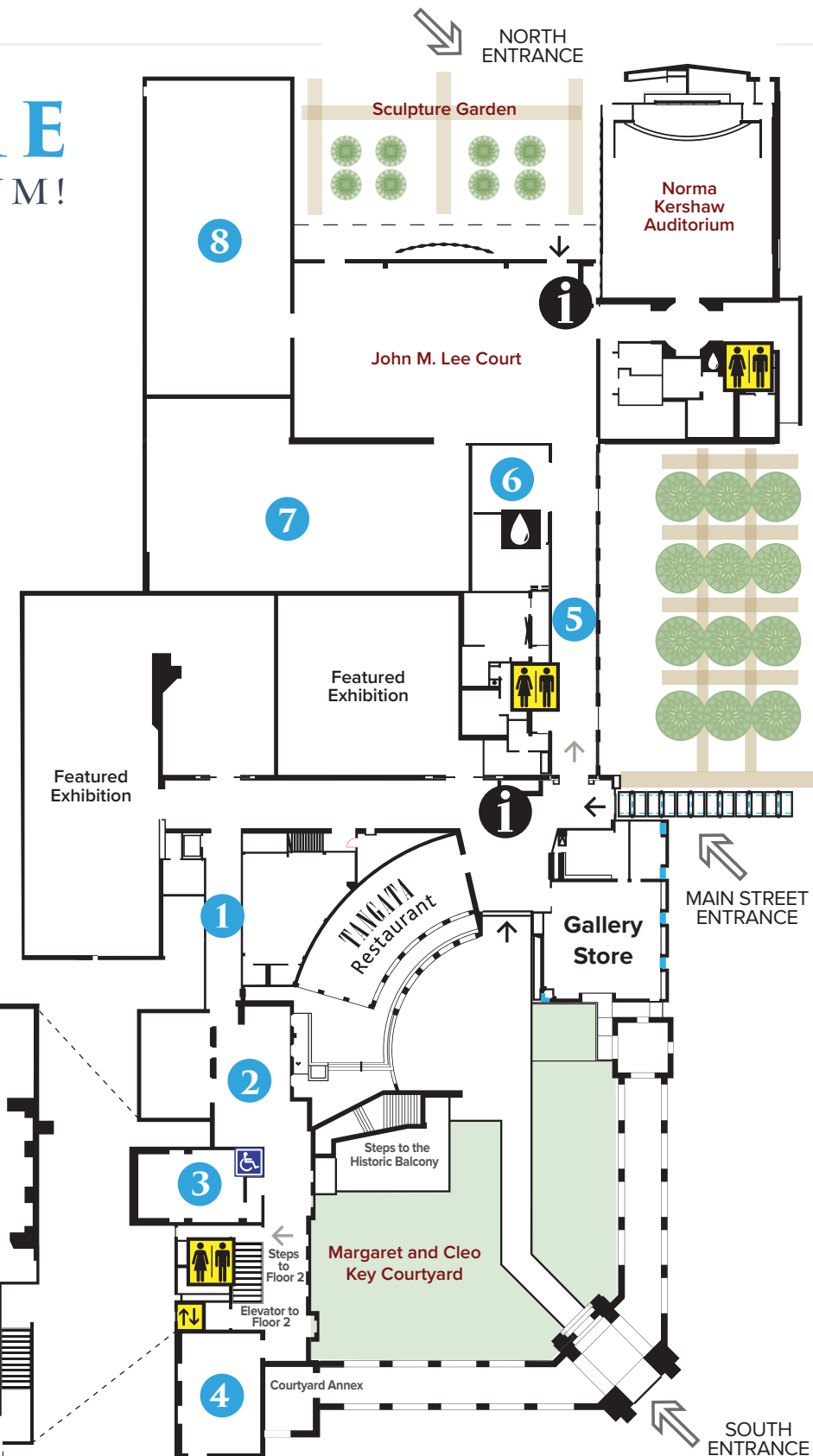
# WELCOME TO THE BOWERS MUSEUM!

Adjacent is a short list that I put together of our not-to-be-missed pieces. All of our eight Permanent Collection galleries are included, for anyone short on time. To fully experience all that the Bowers offers, stop by our award-winning Patina Restaurant, Tangata, and pick up a gift from the Museum Gallery Store.

With sincere appreciation from the Bowers Family,

Seán O'Harrow, Ph.D.  
President & CEO

**APPLY TODAY'S ADMISSION TO YOUR ANNUAL MEMBERSHIP**



- Information/Admissions
- Restrooms
- Water Fountain
- Elevator
- Stairs
- Disabled Access

**Public Tours**  
Held Daily at  
1 PM & 2 PM Tue - Fri  
11 AM, 1 PM & 2 PM Sat - Sun  
*Subject to change, see Admissions Desk for details*

**Digital Guide**  
Access digital guides for select exhibitions at [guide.bowers.org](http://guide.bowers.org)

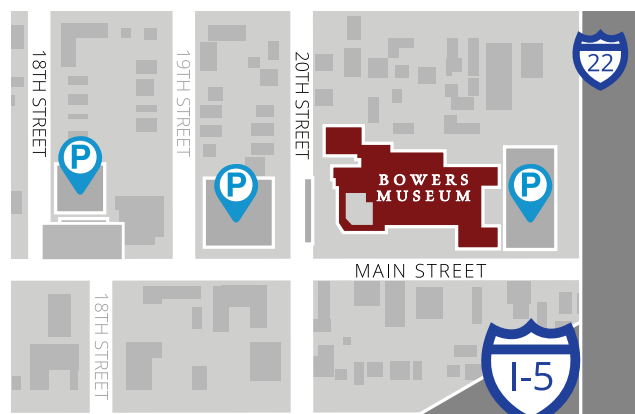
**Audio Tours**  
Access an audio tour of highlights from the permanent collection at [bowers.org/audio](http://bowers.org/audio) or wherever you see a QR code in the museum.



Sponsored by the Margaret A. Cargill Foundation

## HOURS

TUESDAY – SUNDAY, 10 AM – 4 PM  
Closed Mondays



For directions, please visit [bowers.org/visit/directions-parking](http://bowers.org/visit/directions-parking)

Limited street parking is available. We ask guests to observe all city parking signs, meters, and laws. The Bowers is not responsible for parking tickets incurred by guests parking on city streets.

## CONTACT US

**GENERAL**  
714.567.3600

**VISITOR SERVICES**  
714.567.3695

**GROUP TOURS**  
714.567.3680  
[tours@bowers.org](mailto:tours@bowers.org)

**MEMBERSHIP & DONATIONS**  
714.567.3639  
[membership@bowers.org](mailto:membership@bowers.org)

**GALLERY STORE**  
714.567.3643  
[store@bowers.org](mailto:store@bowers.org)

**SPECIAL EVENTS**  
714.567.3623  
[events@bowers.org](mailto:events@bowers.org)

**PUBLIC PROGRAMS**  
714.567.3677  
[education@bowers.org](mailto:education@bowers.org)

**TANGATA RESTAURANT**  
714.550.0906



BOWERS MUSEUM | 714.567.3600  
2002 North Main Street, Santa Ana, CA 92706

Visit [bowers.org](http://bowers.org)

## VISITOR GUIDE



# BOWERS MUSEUM

*Bringing the World to You*

## ON VIEW

### CALIFORNIA BOUNTY

*Image and Identity, 1850–1930*



Untitled (Oranges in Tissue with Vase), 1889 Alberta Binford McCloskey (American, 1855–1911)  
Oil on canvas. Gift of Mrs. Eleanor Russell

### ANCIENT ARTS OF CHINA

A 5000 YEAR LEGACY



Figure of Guanyin; Late Qing dynasty to Republic of China (1870–1949); Ivory; Anonymous Gift 88.31.1

### SPIRITS and HEADHUNTERS



Helmet Mask (Kavat), 20th Century. Baining people; Gazelle Peninsula, East New Britain Province, Papua New Guinea, Melanesia, Oceania. Bark cloth, bamboo cane, paint, raffia and feather; 57 x 31 x 27 in. 2009.1.2. Collected on behalf of the Bowers Museum by the Roski-Keller-Martin Expedition

### GEMSTONE CARVINGS:



THE MASTERWORKS OF HAROLD VAN PELT

Faceted Quartz Egg © 2010 Harold and Erica Van Pelt